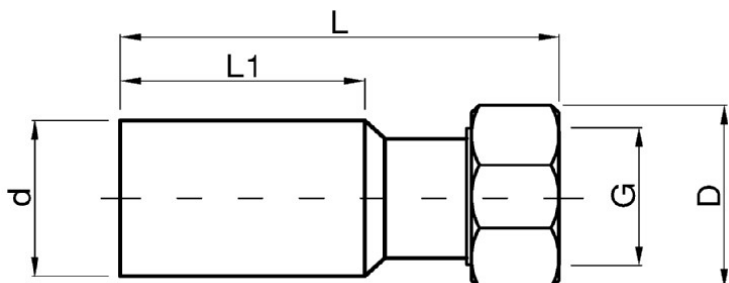


SCHEDA TECNICA



Specifiche tecniche

- HDPE PE100 SDR11 S5
- Ottone CW614N / CW617N secondo UNI EN 12164
- Guarnizione piana in NBR70
- Anello in Poliammide 6
- Applicazione : acqua, PN (PFA) 16 bar 20°C

Codice	d	G	D	L	L1	Peso
	[mm]	[in.]	[mm]	[mm]	[mm]	[Kg]
ADAPEO025C	25	3/4"	32	68	40	0.058
ADAPEO025D	25	1"	42	68	40	0.08
ADAPEO032D	32	1"	42	78	42	0.098
ADAPEO032E	32	1"1/4	51	78	42	0.122
ADAPEO040D	40	1"	42	88	49	0.11
ADAPEO040E	40	1"1/4	51	88	49	0.148
ADAPEO040F	40	1"1/2	55	102	49	0.16
ADAPEO050E	50	1"1/4	55	100	55	0.175
ADAPEO050F	50	1"1/2	55	102	55	0.188
ADAPEO050G	50	2"	70	115	55	0.24
ADAPEO063G	63	2"	70	115	63	0.32

